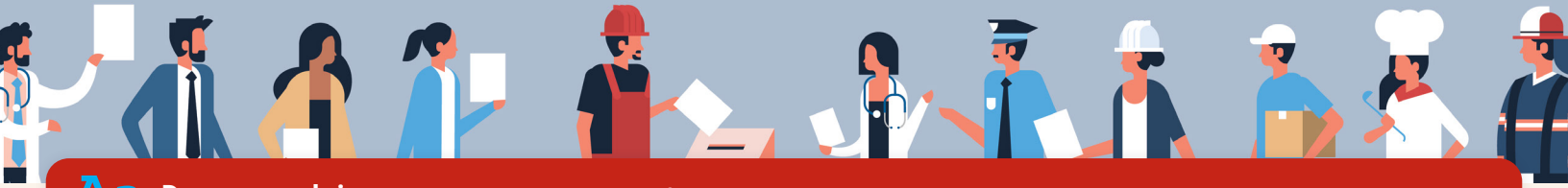


PRESIDENTIAL ELECTION DEMOGRAPHICS IN THE 21ST CENTURY

What demographic changes are transforming U.S. presidential elections in the 21st century? Let's look at how the voting electorate has changed for the 2000-2020 presidential elections.

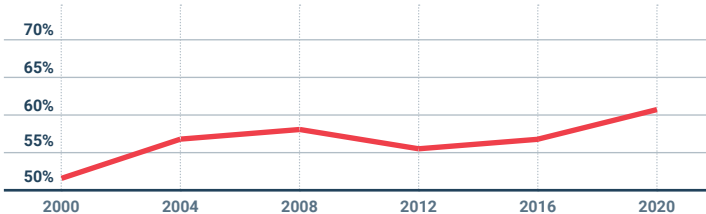


Aa Demographics *noun.* The statistical data of a population, especially those showing age, ethnicity, gender, etc.

VOTER TURNOUT

"Turnout" refers to efforts to measure the extent of popular participation in elections. Turnout is usually discussed as a ratio although always based on a count of votes cast.

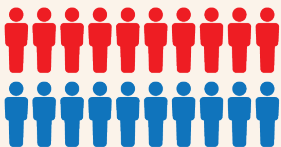
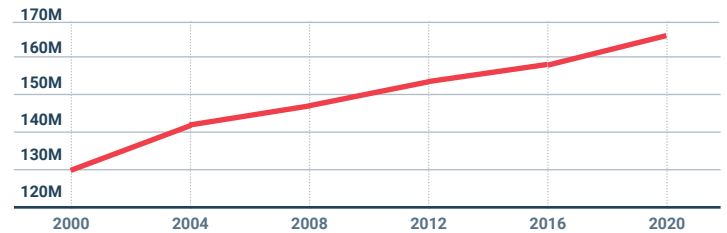
Turnout as % Voting Age Population (2000-2020)



VOTER REGISTRATION

Registered voters counts the total number of eligible people who have taken the additional step of registering to vote. Some states do not have registration requirements.

Number of Registered Voters (2000-2020)



DID YOU KNOW? BLACK, ASIAN, AND YOUNG VOTERS BROKE RECORDS IN THE 21ST CENTURY.

2008: Barack Obama (D) vs. John McCain (R)

☞ More African Americans voted in the 2008 presidential election than ever before. Voter turnout for African Americans was 65% in 2008, compared to 63% in 2020 and 60% in 2016.

2020: Joe Biden (D) vs. Donald Trump (R)

☞ For citizens ages 18-34, 57% voted in 2020, up from 49% in 2016.

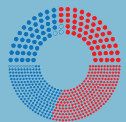
☞ Asian voter turnout was at an all-time high of 59.7% for the 2020 presidential election.



65%

of African Americans voted in the 2008 presidential election

POPULAR VOTE VS. ELECTORAL VOTE



George W. Bush (R)
47.90% (PV)
50.37% (ECV)

2000



George W. Bush (R)
50.70% (PV)
53.16% (ECV)

2004



Barack Obama (D)
52.90% (PV)
67.84% (ECV)

2008



Barack Obama (D)
51.10% (PV)
61.71% (ECV)

2012



Donald Trump (R)
46.00% (PV)
56.69% (ECV)

2016



Joe Biden (D)
51.30% (PV)
56.88% (ECV)

2020

PV = Popular Vote | ECV = Electoral College Vote

STUDENT GOVERNMENTAL AFFAIRS PROGRAM | SGAP.ORG

<https://www.presidency.ucsb.edu/statistics/data/voter-turnout-in-presidential-elections>; https://www2.census.gov/programs-surveys/cps/tables/time-series/voting-historical-time-series/hst_vote01.xlsx; https://www2.census.gov/programs-surveys/cps/tables/p20/585/table02_1.xlsx; <https://www.census.gov/newsroom/press-releases/2021/2020-presidential-election-voting-and-registration-tables-now-available.html>; <https://www.census.gov/library/stories/2021/04/record-high-turnout-in-2020-general-election.html>; <https://www.statista.com/statistics/1034688/share-electoral-popular-votes-each-president-since-1789/>

